

Valve Regulated Lead Acid Battery

Maintenance-Free Sealed Lead Acid Battery.

Absorbent Glass Mat (AGM) technology for efficient gas recombination of up to 99%.

Design for Cyclic Applications

【Design Life】

400 cycles @ 100%DOD at 25°C

1800 cycles @ 30%DOD at 25°C

【Operating Temperature Range】

Nominal Operating Temperature : 25°C (77°F)

Discharge : -15°C ~ 50°C (5°F~122°F)

Charge: -15°C ~ 40°C (5°F~104°F)

Storage: -15°C ~ 40°C (5°F~104°F)

【Equalization Charging Voltage】

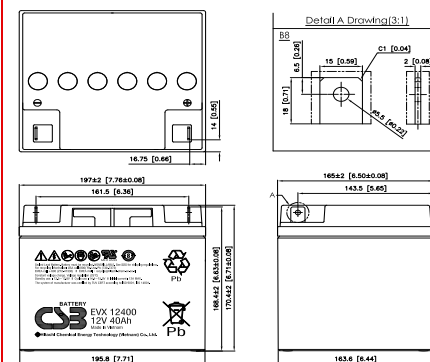
14.4 ~ 15.0 VDC/Unit at 25°C (77°F)

【Self Discharge】

Less than 10% after 90 days, can be stored up to 6 months at 25°C (77°F); Fully recharging is required before usage, and charged sooner if stored at higher temperature than 25°C (77°F).

Specification

Nominal Voltage	12V (6 cells per unit)		
Nominal Capacity	40 AH @20HR-rate to 1.75V per cell @25°C (77°F)		
Weight	Approx. 13.20 Kg (29.07 lbs)		
Maximum Discharge Current	400A (5sec)		
Internal Resistance	Approx. 8.2 mΩ		
Short Circuit Current	--		
Maximum Charge Current	12.00A		
Terminal types	B8 (I2) terminal to accept M5 (M6) bolt		
Terminal Breaking Torque	59 (138.6) Kgf-cm / 51 (120.3) lbf-in / 5.73 (13.58) N·m		
Container Material	ABS (UL 94-HB)		
Dimensions	Length (L)	197.0±2.0 mm	7.76±0.08 inch
	Width (W)	165.0±2.0 mm	6.50±0.06 inch
	Container Height (h)	170.4±2.0 mm	6.71±0.08 inch
	Overall Height (H)	170.4±2.0 mm	6.71±0.08 inch



Constant Current Discharge Characteristics Unit: A (25°C, 77°F)

F.V/Time	30MIN	45MIN	60MIN	90MIN	2HR	3HR	4HR	5HR	6HR	8HR	10HR	20HR
1.60V	38.1	28.3	22.9	16.8	13.4	9.75	7.76	6.42	5.50	4.31	3.59	2.17
1.67V	37.0	27.5	22.3	16.3	13.0	9.47	7.52	6.24	5.34	4.18	3.49	2.12
1.70V	35.8	26.7	21.7	15.8	12.7	9.17	7.33	6.07	5.19	4.05	3.40	2.05
1.75V	34.8	25.9	21.0	15.3	12.3	8.88	7.09	5.91	5.05	3.94	3.30	2.00
1.80V	33.7	25.1	20.3	14.8	11.9	8.58	6.89	5.70	4.88	3.82	3.17	1.94
1.85V	32.6	24.1	19.5	14.4	11.4	8.29	6.63	5.48	4.70	3.68	3.09	1.89

Constant Power Discharge Characteristics Unit: W (25°C, 77°F)

F.V/Time	30MIN	45MIN	60MIN	90MIN	2HR	3HR	4HR	5HR	6HR	8HR	10HR	20HR
1.60V	457	340	275	201	162	117	93.0	76.8	65.0	49.9	41.1	22.3
1.67V	444	330	268	196	157	113	90.1	74.6	63.1	48.4	40.0	21.6
1.70V	430	320	260	189	152	110	87.6	72.3	61.1	46.9	38.8	20.9
1.75V	417	311	252	184	147	107	84.5	69.9	59.2	45.5	37.6	20.3
1.80V	404	300	243	178	143	103	81.5	67.4	57.1	44.0	36.4	19.6
1.85V	391	290	235	173	138	99.5	78.9	64.9	55.1	42.6	35.2	19.0

Please refer to the official site for the latest rating confirmation. URL: www.csb-battery.com

Issued: 190522

Sales Offices

日立化成能源科技股份有限公司
Hitachi Chemical Energy Technology Co., Ltd.

BUSINESS HEADQUARTERS

Tel: +886-2-2880-5600

Fax: +886-2-2888-3300

USA OFFICE

Tel: +1-817-244-7777 / 1-(800)3-CSB-USA (272872)

Fax: +1-817-244-4445

SHENZHEN OFFICE (CHINA)

Tel: +86-755-8831-6488, 8831-6775

Fax: +86-755-8831-6075

EUROPE (EMEA) OFFICE

Tel: +31(0)180-418-140

Fax: +31(0)180-418-327

SHANGHAI OFFICE (CHINA)

Tel: +86-21-5046-1622, 5046-0833

Fax: +86-21-5046-1046

TAIPEI OFFICE

Tel: +886-2-2880-5600

Fax: +866-2-2888-3300

BEIJING OFFICE (CHINA)

Tel: +86-10-5820-5336, 5820-5338

Fax: +86-10-5820-3053

Recognized under UL 1989,
and certified by ISO 9001, 14001.

